

HOME

150 E ONTARIO STREET

# 150 E Ontario Street Receives Foundation Permit In Streeterville



Aerial View of 150 E Ontario Street. Rendering by Lucien LaGrange Studio

BY: JACK CRAWFORD 7:45 AM ON JULY 26, 2022

A foundation permit has been issued for the planned **150 E Ontario Street**, kicking off the first high rise to be built in **Streeterville** in several years. Filling in a long-vacant patch of land within an otherwise dense downtown segment, the new construction will be a 28-story **hotel** for the Spanish hotel chain RIU Hotels and Resorts. **The Prime Group** is the developer for this proposal, having also contributed \$2.9 million to the Neighborhood Opportunity Fund alongside the project.



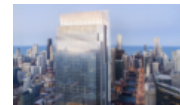
ADVERTISEMENT

## FEATURE STORIES



JANUARY 26, 2022

**Details Revealed For Mixed-Use Development At 170 N Green Street In Fulton Market**



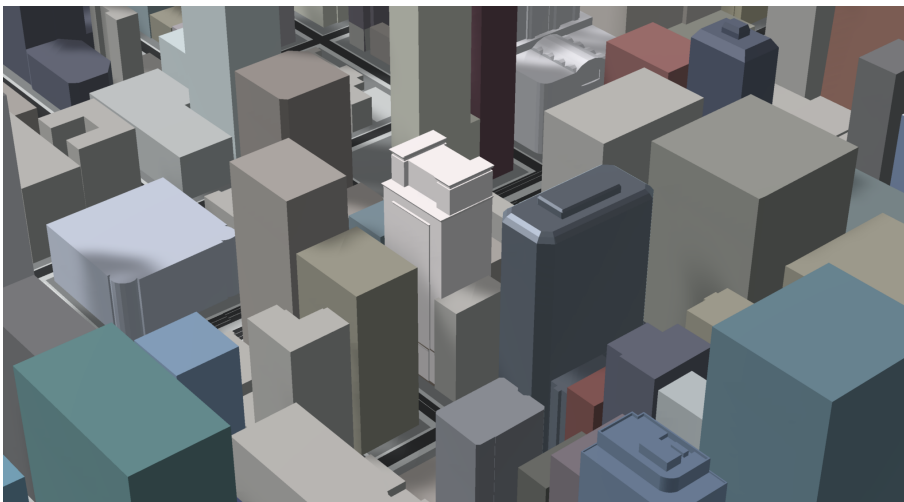
JANUARY 12, 2022

**Salesforce Tower Core Tops Out in River North**

Follow on Instagram



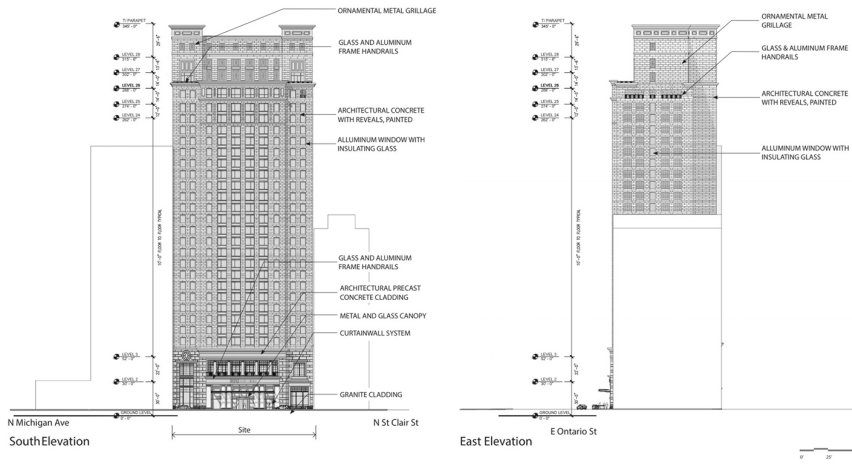
150 E Ontario Street. Rendering by Lucien LaGrange Studio



150 E Ontario Street. Model by Jack Crawford

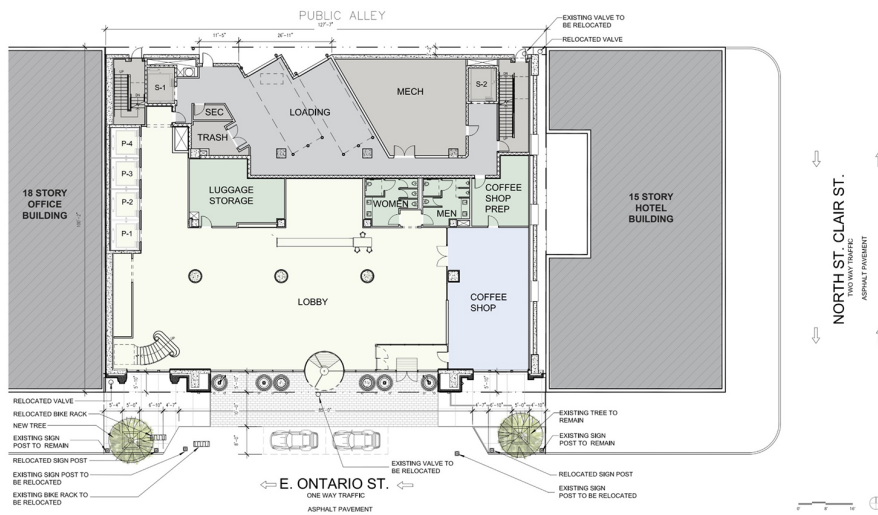


View of 150 E Ontario Street. Rendering by Lucien LaGrange Studio

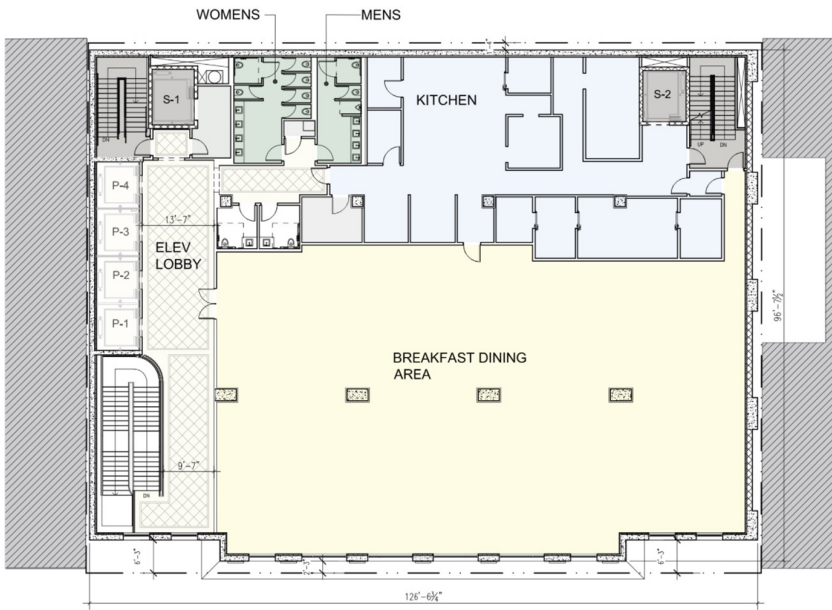


Elevations of 150 E Ontario Street. Drawings by Lucien LaGrange Studio

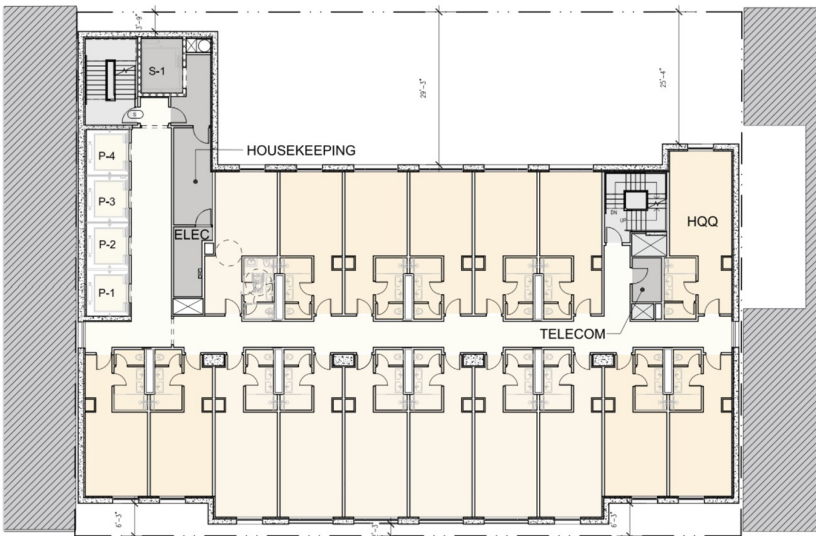
This **Lucien LaGrange Studio**-designed tower will be 345 feet high and house 388 hotel rooms. The edifice will be classically styled with painted architectural concrete, aluminum-framed windows, and pre-cast concrete cornices. The tower's crown will have two ornamental tower sections that protrude slightly higher than the roofline. Attached to the lobby, meanwhile, will also be glass and metal canopy will extend over the sidewalk, providing shelter from the elements, while the east side of the ground floor will host a coffee shop.



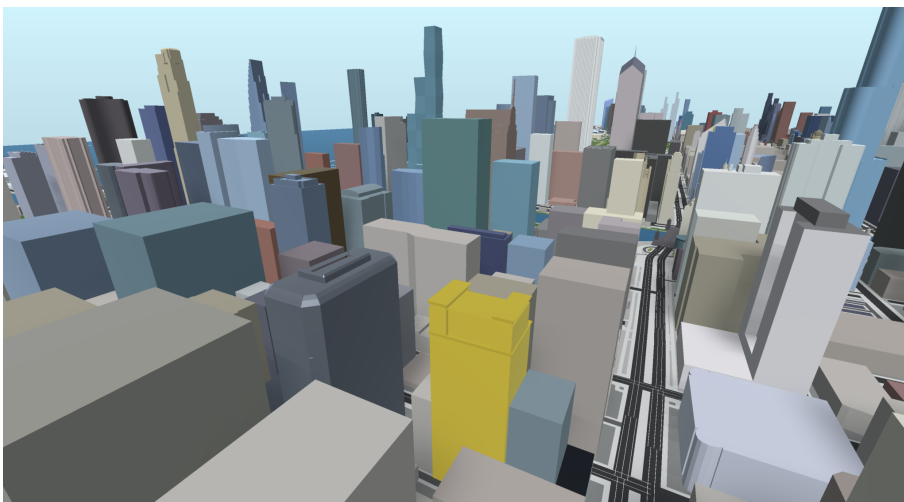
Site Plan for 150 E Ontario Street. Drawing by Lucien LaGrange Studio



Second Floor Plan for 150 E Ontario Street. Drawing by Lucien LaGrange Studio

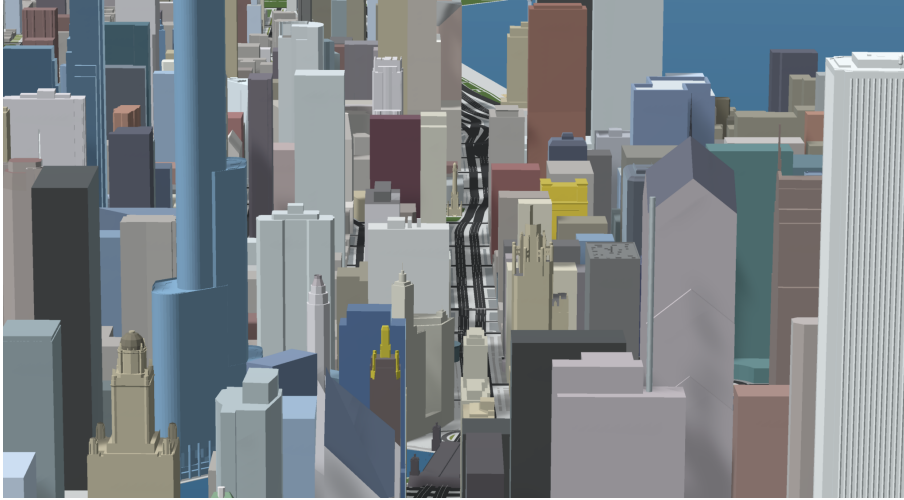


Typical Guest Floor Plan for 150 E Ontario Street. Drawing by Lucien LaGrange Studio

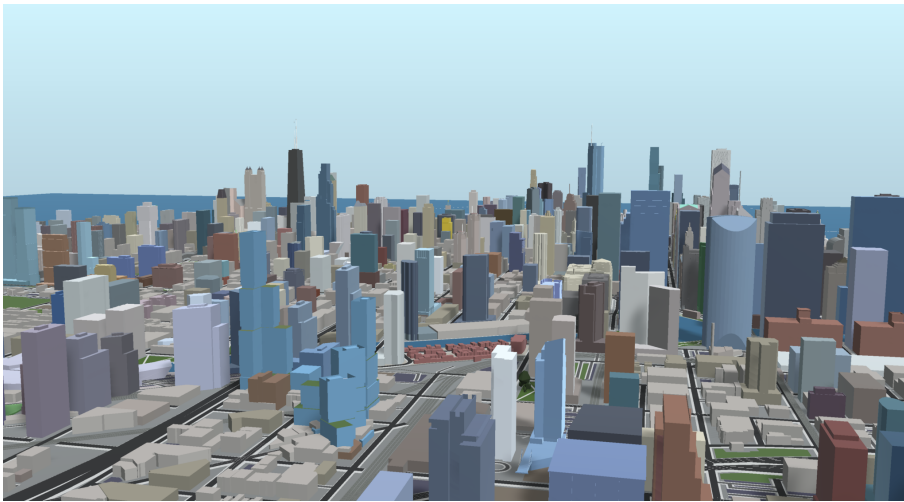


150 E Ontario Street (gold). Model by Jack Crawford

While zero parking spaces are included within the plans, a multitude of existing transit options can be found within close proximity. Bus service for Routes 2, 3, 10, 26, 125, 143, 146, 147, 148, 151, and 157 are all available within a single block, while the CTA L Red Line is located at Grand station via an eight-minute walk southwest.



150 E Ontario Street (gold). Model by Jack Crawford



150 E Ontario Street (gold). Model by Jack Crawford

**W.E. O’Neil Construction** is serving as general contractor. Having been pushed back about a year from its original timeline, the project is now looking at a targeted mid-2024 completion date.

[Subscribe](#) to YIMBY’s daily e-mail

[Follow](#) YIMBYgram for real-time photo updates

[Like](#) YIMBY on Facebook

[Follow](#) YIMBY’s Twitter for the latest in YIMBYnews

150 E ONTARIO STREET

HOTEL

LUCIEN LAGRANGE STUDIO

STREETERVILLE

THE PRIME GROUP

W E ONEIL CONSTRUCTION



SHARE



TWEET



SHARE



SHARE